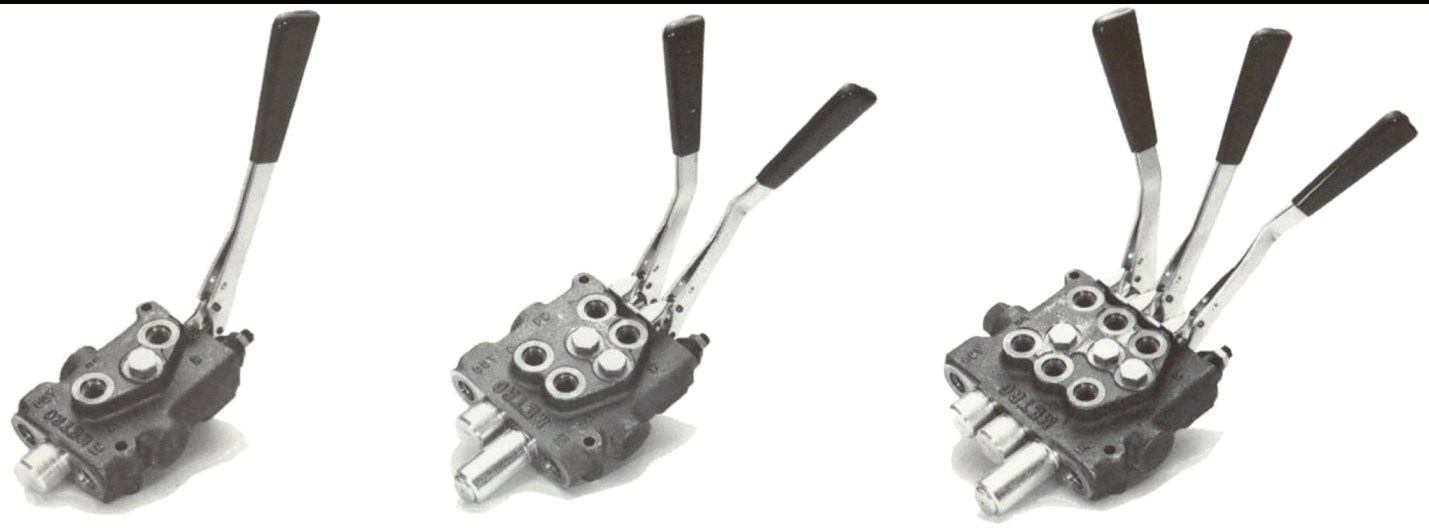


# D SERIES 6 GPM DIRECTIONAL CONTROL VALVES 1, 2 & 3 SPOOL

METRO MACHINE & ENGINEERING 952-259-3623



## FEATURES

- One piece mono-block body construction using high tensile cast iron.
- Hard chrome plated and precision fitted spools.
- Easy installation with inlet and outlet ports on same end.
- Load check for each spool prevents accidental load drop (omitted with motor spool).
- Standard open center valving.

## OPTIONS

- Variety of spool configurations.
- Spring centered or detented.
- Power beyond or closed center adapter plugs.
- Handle assemblies.
- **“MULTI” VALVE**, special 1 spool 4 way to 3 way conversion valve.

## SPECIFICATIONS

Pressure Rating	Temperature Range
3000 PSI (207 Bar)	-22° to + 194° F -30° to + 90° C

ORDER EXAMPLE FOR D2DF1T2J					
D2	D	SPOOL 1	F 1		J
		SPOOL 2	T 2		
		SPOOL 3			
Basic Valve Function (With Load Checks)	Relief Setting (Cracking Pressure)	Spool	Spring Return	Power Beyond Option	Handle Option
Repeat For Each Spool					
D1 1 Spool Valve	0 = No Relief	M = MOTOR (Load Check Omitted)	1 = Spring Centered with One Position Detent 2 = Standard Spring Centered Type	Omit if Not Required	Omit if No Handle Assembly Required
D2 2 Spool Valve	RELIEF SETTING A = 1000 PSI B = 1500 PSI C = 2000 PSI	T = TANDEM	3 = 3 Position Detent (no spring) 4 = Micro Switch (incorporates spring centering)	P = Power Beyond	H = (1) Complete Handle Assy. (not attached)
D3 3 Spool Valve	D = 2500 PSI E = 3000 PSI	Y = 3 WAY	5 = 2 Position Detent (neutral/spool in) 6 = 2 Position Detent (neutral/spool out) 7 = 2 Position Detent (spring offset)	S = Closed Center Plug	J = (2) Complete Handle Assy. (not attached)
CDI “Multi” Valve special 1 spool 4 way to 3 way conversion valve		F = FLOAT (specify spring return option “1” with this spool)	8 = Special, Detent Spool In, Spring Return Out 9 = Special, Detent Spool Out, Spring Return In		K = (3) Complete Handle Assy. (not attached)

## ORDER PROCEDURES

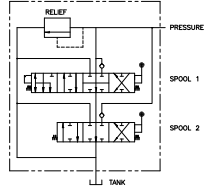
When developing the complete part number, copy all codes required.

**Note:** Other relief pressure settings, spool configuration, or port sizes available upon special order. Please consult factory.

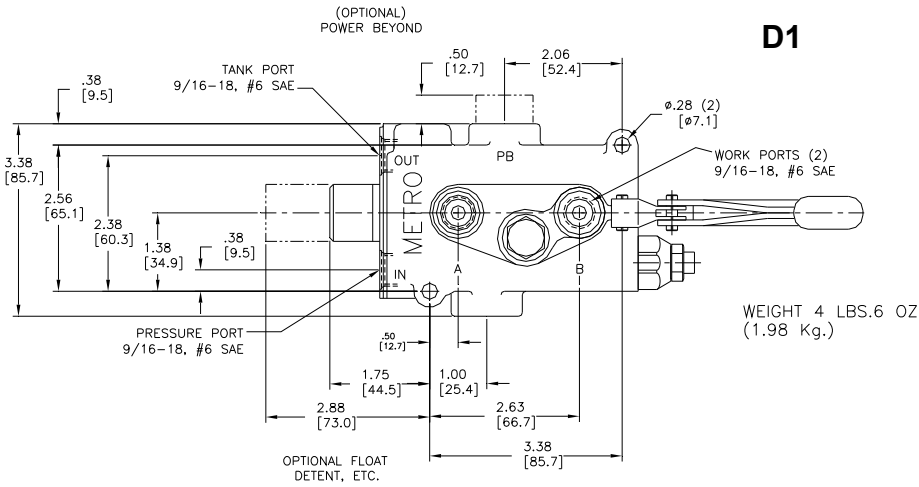
## ORDER EXAMPLE

Complete part number of example **D2DF1T2J**

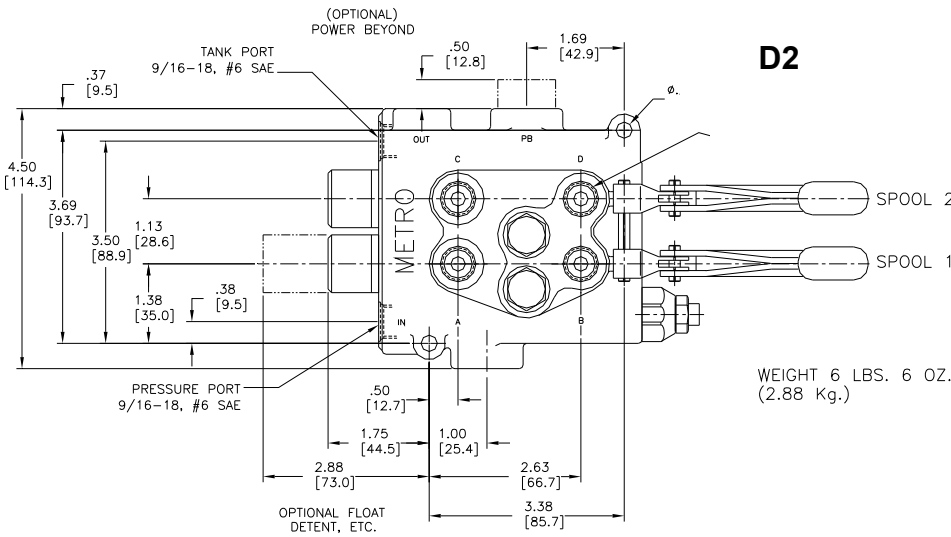
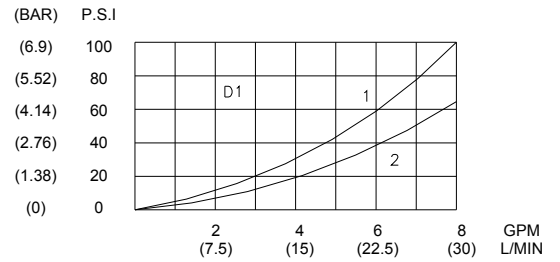
Float spool must always be in first or third position.



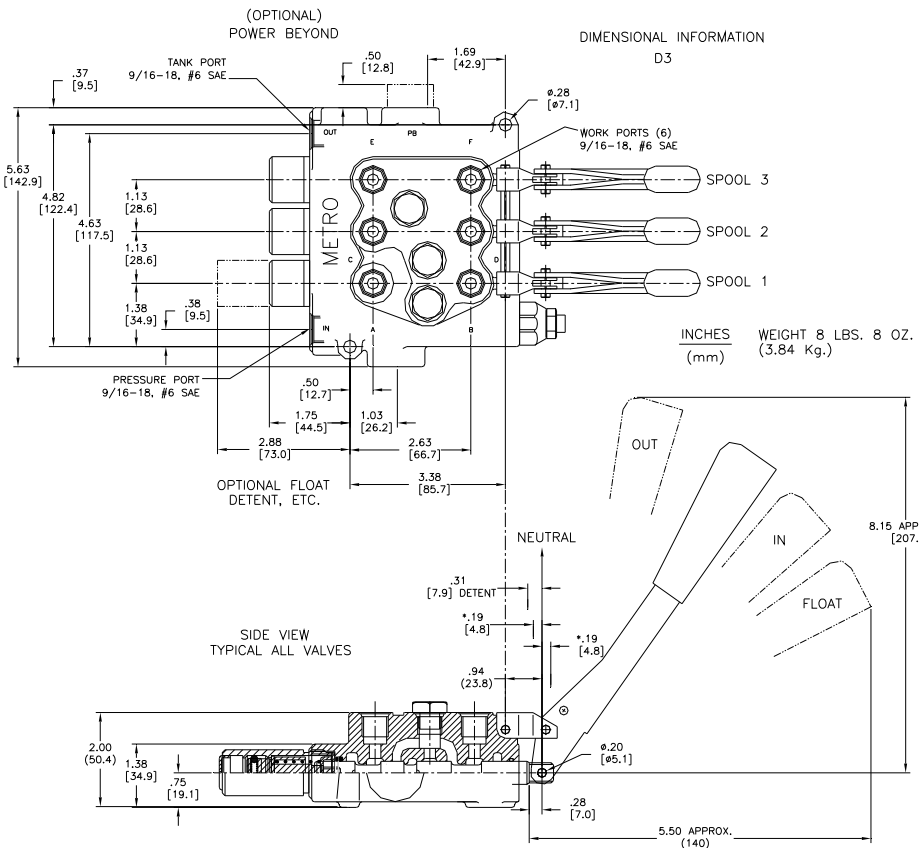
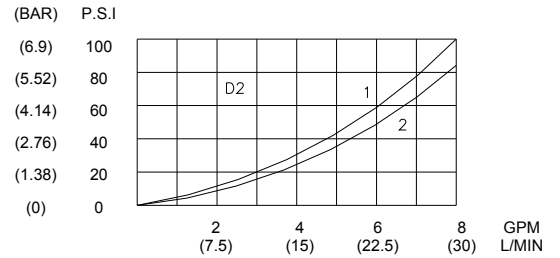
# DIMENSIONAL INFORMATION



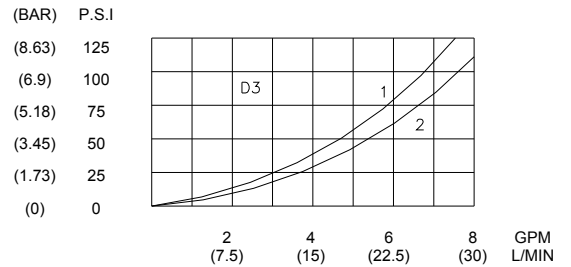
**PRESSURE DROP CHARACTERISTICS**



**PRESSURE DROP CHARACTERISTICS**



**D3 PRESSURE DROP CHARACTERISTICS**



1—PRESSURE TO WORK PORT  
2—PRESSURE TO TANK

**MAXIMUM INTERNAL LEAKAGE**  
1 cubic inch/minute at 1000 psi  
16.4 milliliters/minute at 69 bar

\*THIS DIMENSION CHANGES TO .12/(3.2) WHEN OPTIONAL FLOAT POSITION SPOOL IS USED.

NOTE: HANDLE ASSEMBLY NOT ATTACHED TO VALVE FOR SHIPPING. DESIGNED FOR STANDARD 90° AS SHOWN, MAY ALSO BE USED REVERSED FROM STANDARD.